



AOSTA



CLARA



COSENZA



FORLI



HUG



MARINELLO



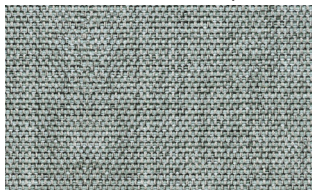
ENNA



MONDELLO

These ranges are also available in our Universal Collection.

Fabrics for Body and Scatters



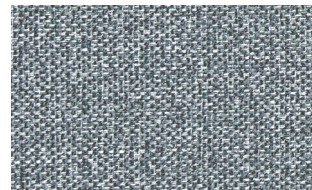
T223

51% Co 49% Ply
PR N/A W 140cm



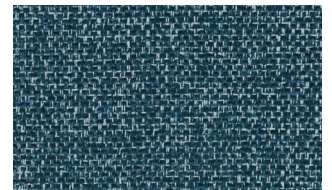
T263

95% Ply 5% Ac
PR N/A W 142cm



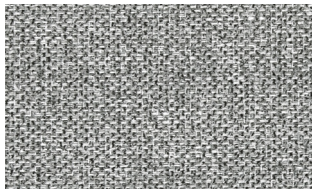
T296

100% Ply
PR N/A W 140cm



T297

100% Ply
PR N/A W 140cm



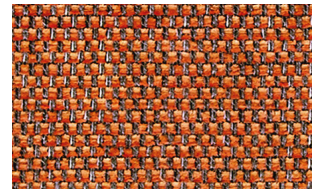
T298

100% Ply
PR N/A W 140cm



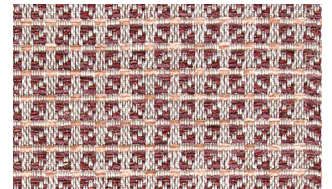
T299

100% Ply
PR N/A W 140cm



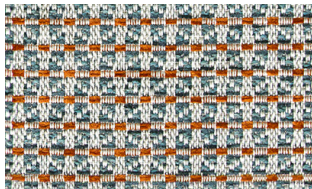
T315

51% Co 49% Ply
PR N/A W 140cm



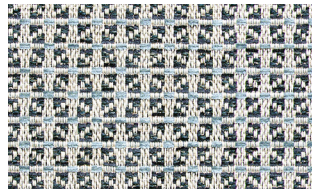
T319

54% Ply 32% Ac 10% Co 2% Vi 2% Li
PR N/A W 138cm



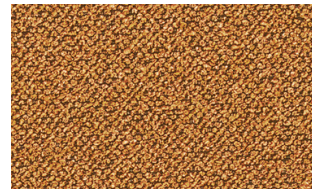
T320

54% Ply 32% Ac 10% Co 2% Vi 2% Li
PR N/A W 138cm



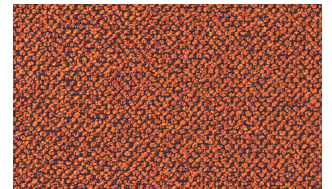
T321

54% Ply 32% Ac 10% Co 2% Vi 2% Li
PR N/A W 138cm



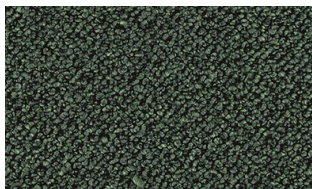
T324

100% Ply
PR N/A W 140cm



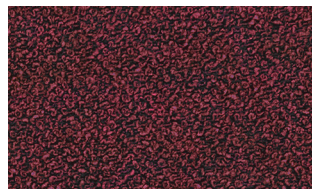
T325

100% Ply
PR N/A W 140cm



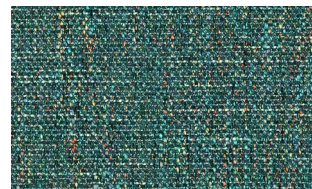
T326

100% Ply
PR N/A W 140cm



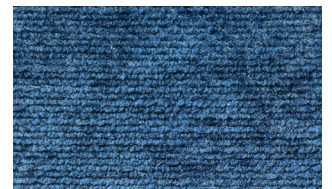
T327

100% Ply
PR N/A W 140cm



T328

100% Ply
PR N/A W 138cm

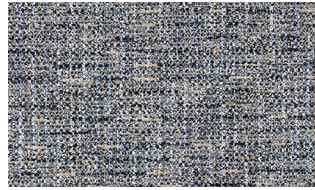


T329

100% Ply
PR N/A W 138cm



T330
100% Ply
PR N/A W 138cm



T331
100% Ply
PR N/A W 142cm

Leathers for Body only



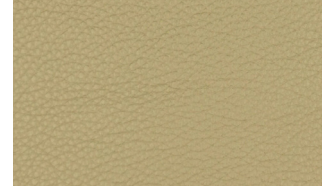
LI102
100% Lh



LI103
100% Lh



LI302
100% Lh



LI303
100% Lh



LI304
100% Lh



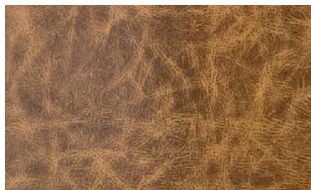
LI306
100% Lh



LI501
100% Lh



LI502
100% Lh



LI503
100% Lh

Abbreviations:

Ac - Acrylic
Co - Cotton
Fl - Flax
Lh - Leather
Li - Linen
Mod - Modacrylic
N/A - Not applicable

Ny - Nylon
OR - Other Recycled Fibres
Pa - Polyamide
PR - Pattern repeat
Pc - Polycotton
Ply - Polyester
PP - Polypropylene

R - Recycled
Ra - Rayon
Se - Silk
U - Undyed
Vi - Viscose
W - Width
Wo - Wool